



# ALCANTARA

SAHL HASHEESH

*On The Rise*



DEVELOPMENTS

# ALCAMAR

S A H L H A S H E E S H

Designed with a modern-arabesque flair, Alcamar sits majestically on the northern headland of Sahl Hasheesh, 30 meters above sea level offering flawless sea views and a lush green golf course backdrop.

The project features apartments, penthouses and villas designed for the ideal holiday escape or year-round luxury living, perfect for all tastes. Residents enjoy a fully-serviced club house with a vast landscape of refreshing pools and whimsical green palms.

The project is located just 20 minutes from Hurghada International Airport, making it easily accessible from Cairo and many major European hubs.

[Idyllic living is on the rise at Alcamar...](#)



SAHL HASHEESH  
RED SEA

Masterplan



ALCAMAR  
SAHL HASHEESH



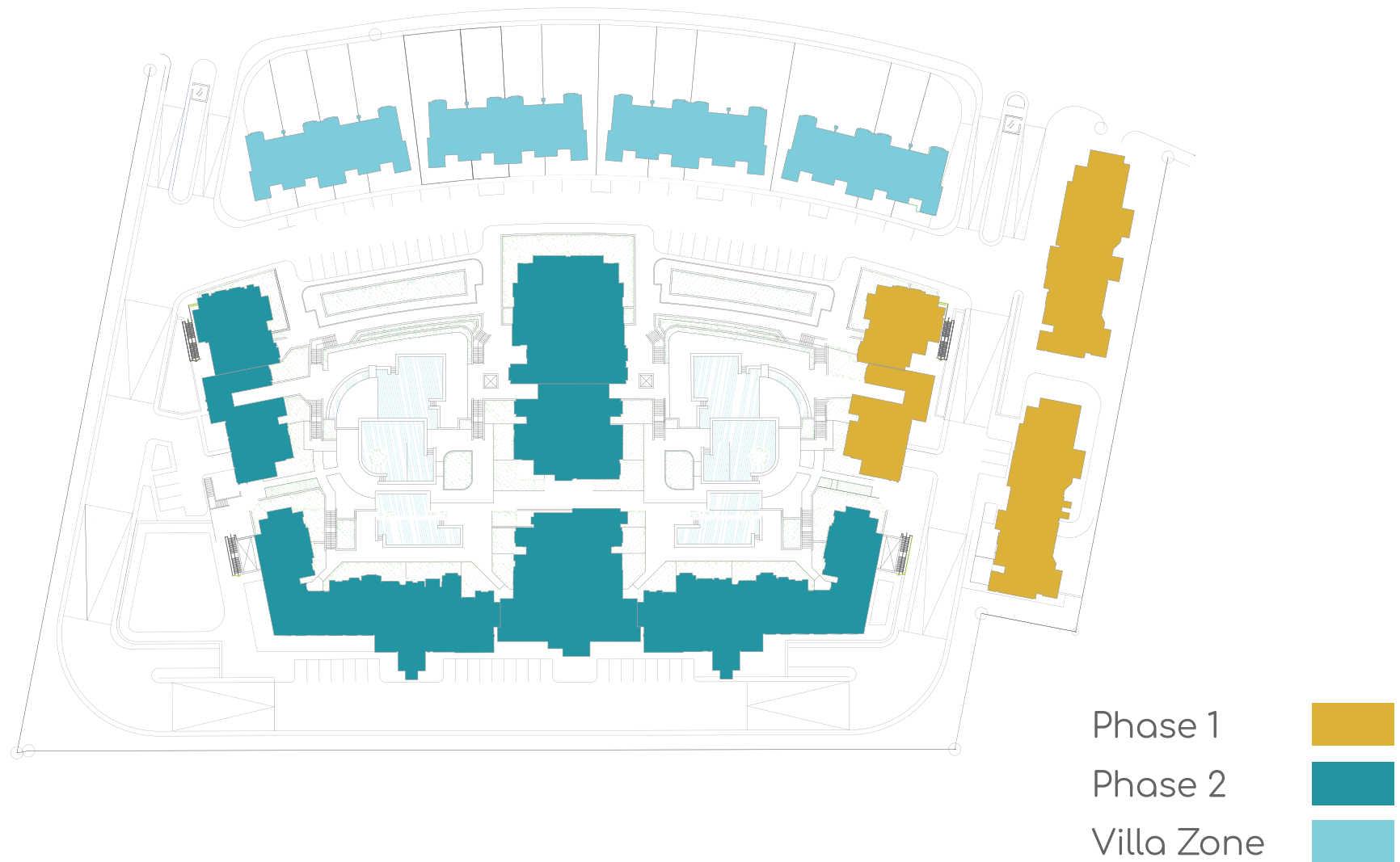
The background of the entire page is a photograph of ocean waves. The waves are white and frothy, breaking against a greyish-blue sea. The sky is a pale, hazy blue. The overall tone is serene and coastal.

# ALCANTARA

S A H L H A S H E E S H

Floor Plans

# Masterplan



# Phase 1

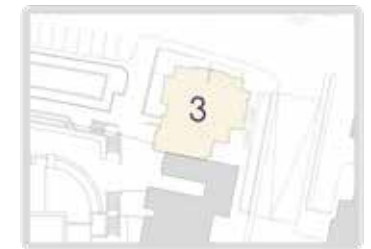


# Building 3

## Ground & 1<sup>st</sup> Floor

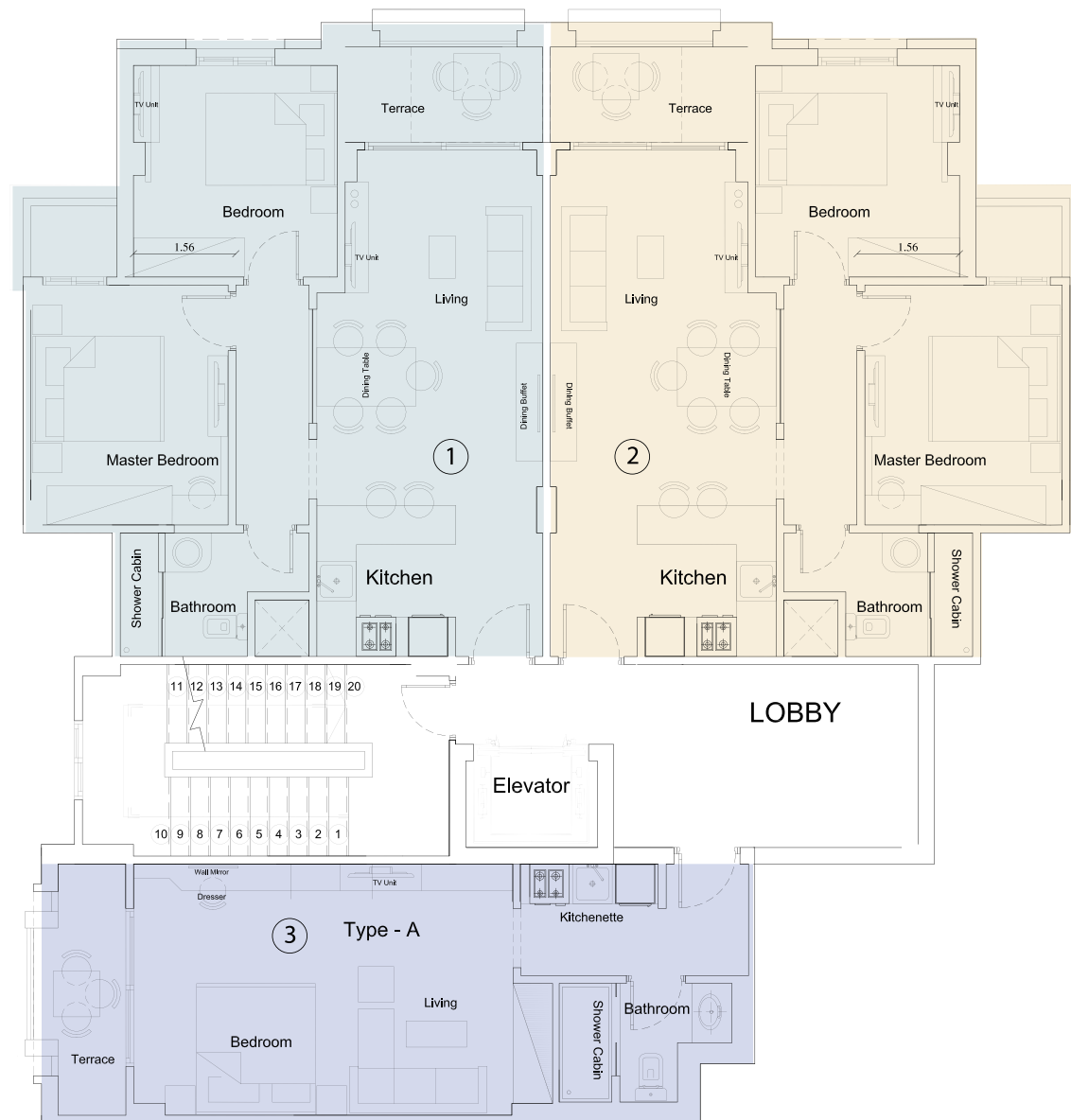


- ① Type - D
- ② Type - D

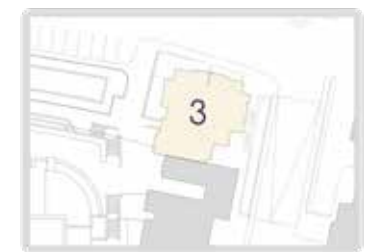


# Building 3

## 2<sup>nd</sup> Floor



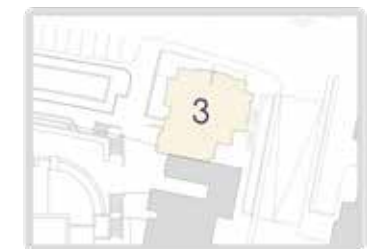
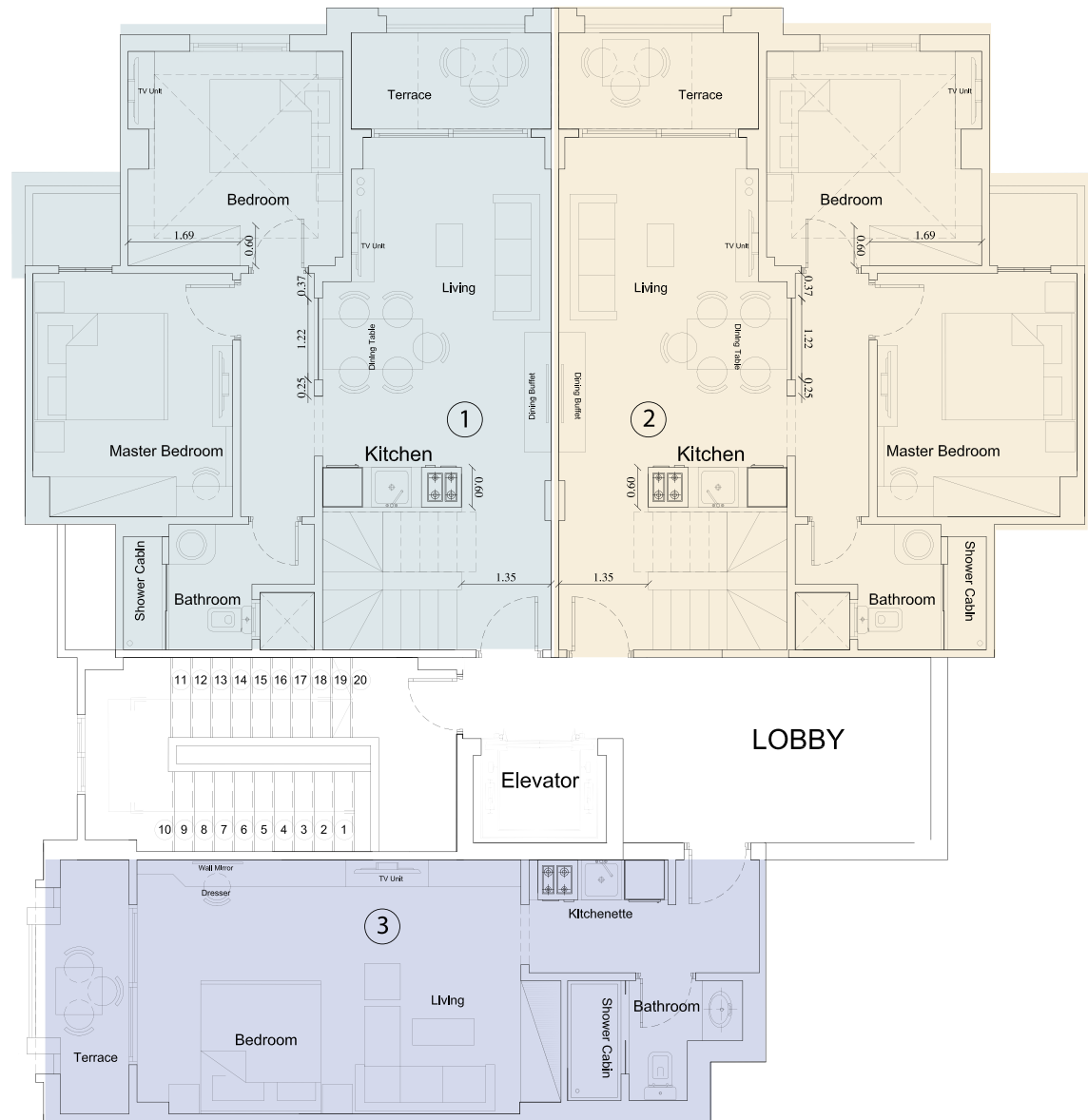
- ① Type - D
- ② Type - D
- ③ Type - A





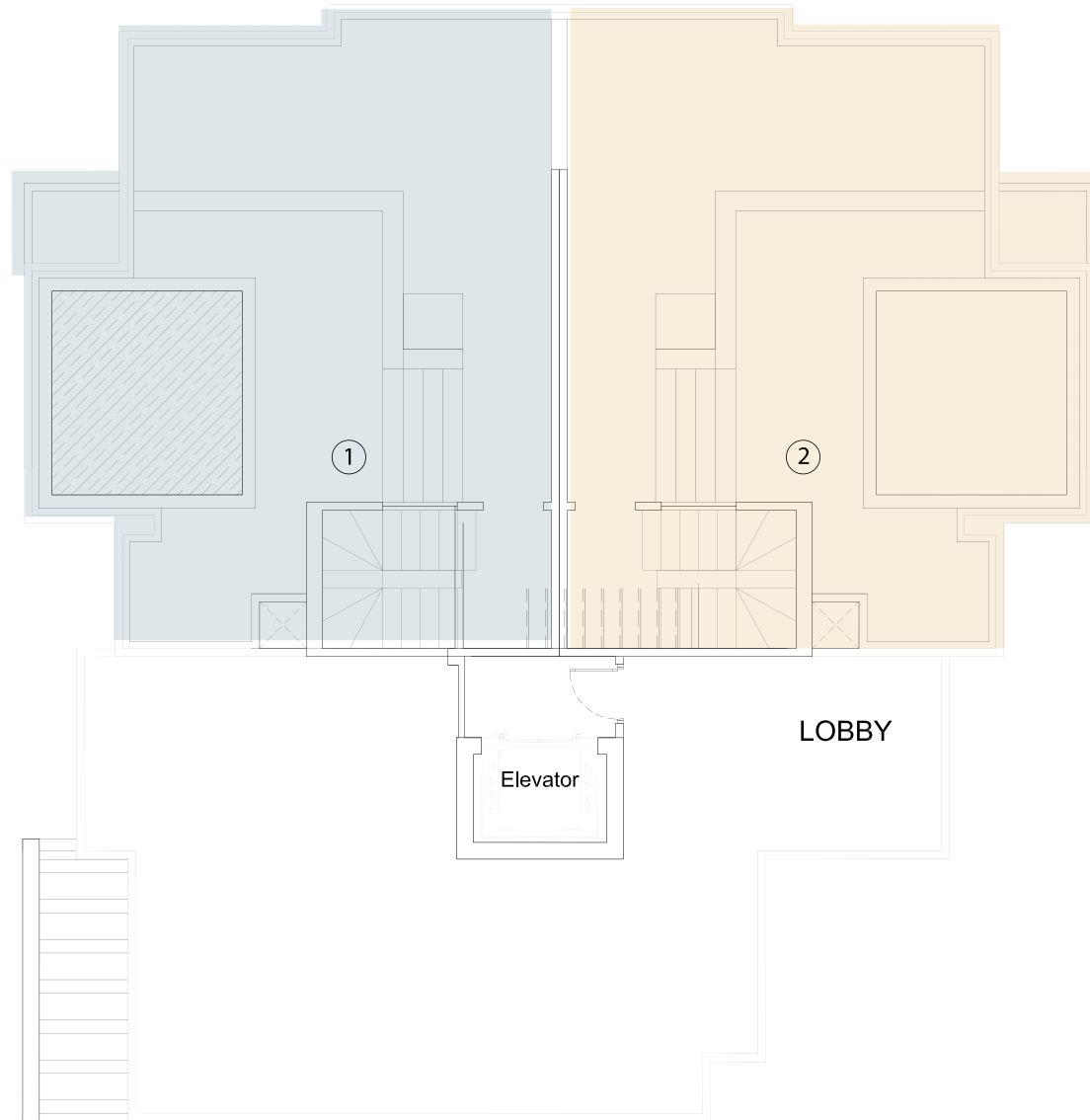
# Building 3

## 3<sup>rd</sup> Floor



- ① Type - N
- ② Type - N
- ③ Type - A

# Building 3 Roof



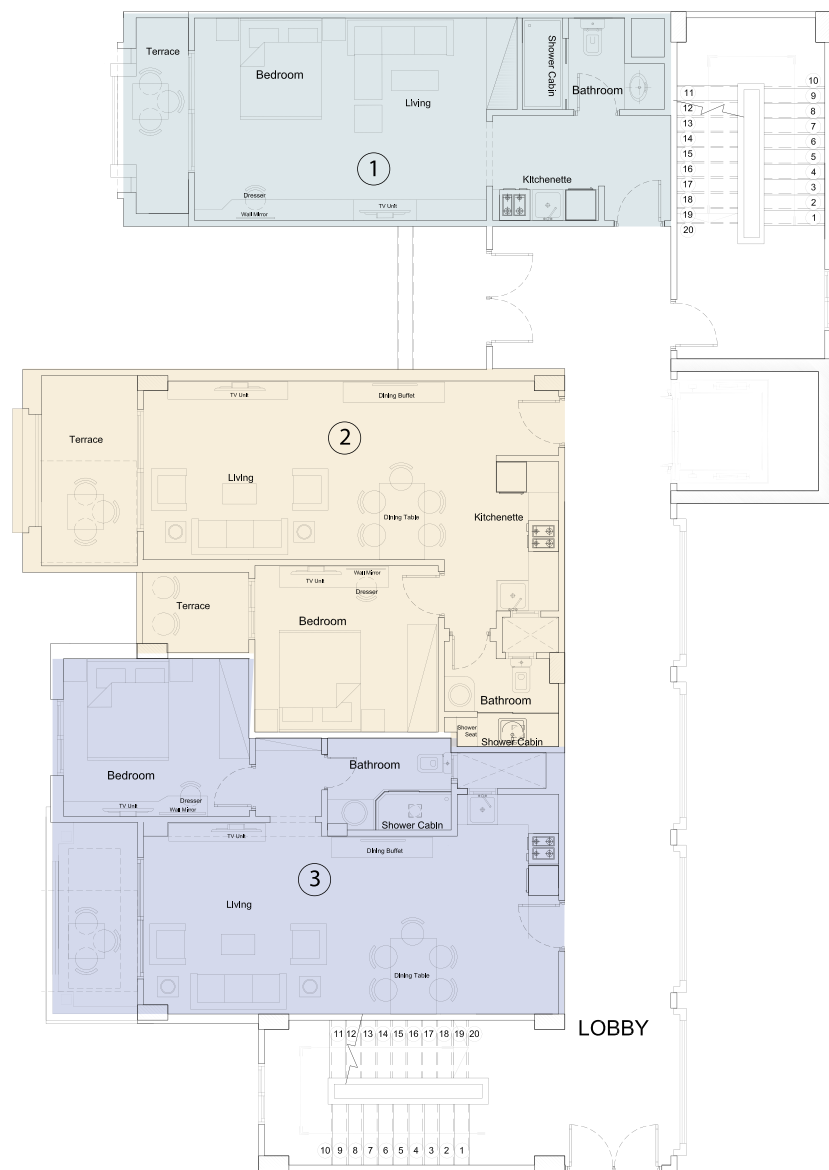
- ① Type - N
- ② Type - N



# 6 Building

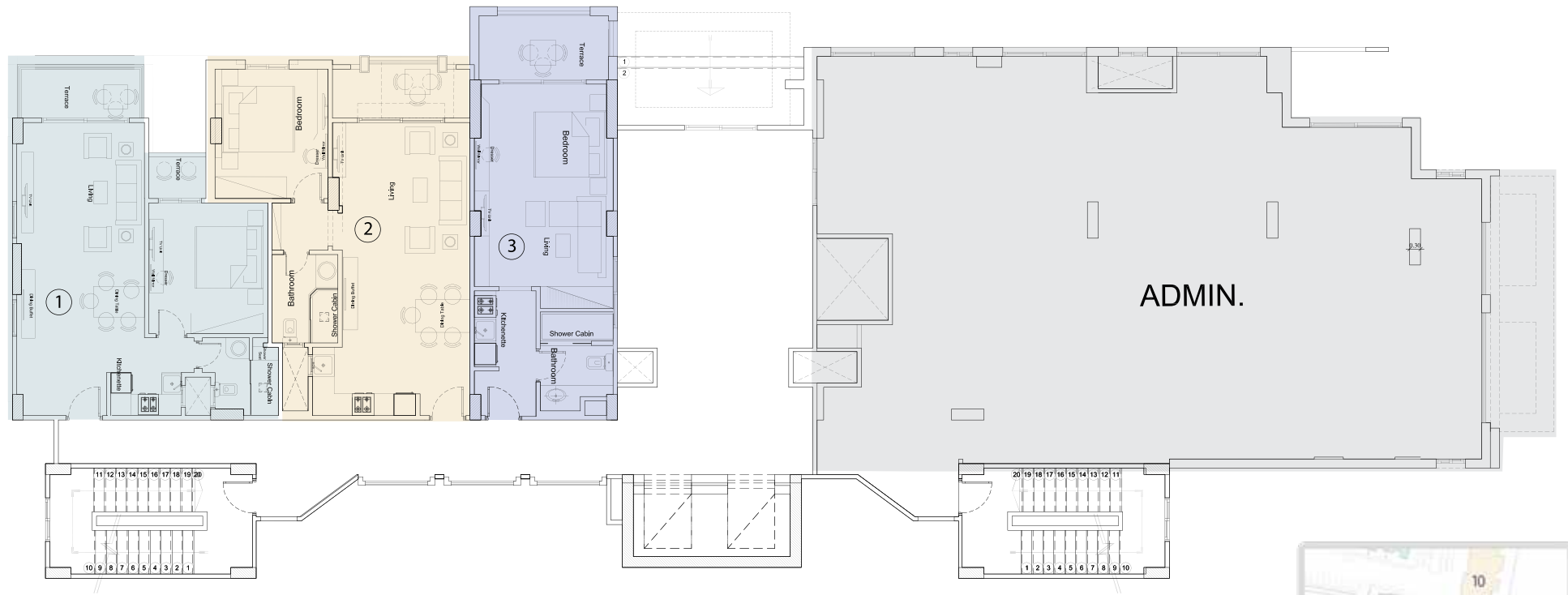
## 1<sup>st</sup>, 2<sup>nd</sup> & 3<sup>rd</sup> Floor

- ① Type - A
- ② Type - C
- ③ Type - B



# Building 10 & 11

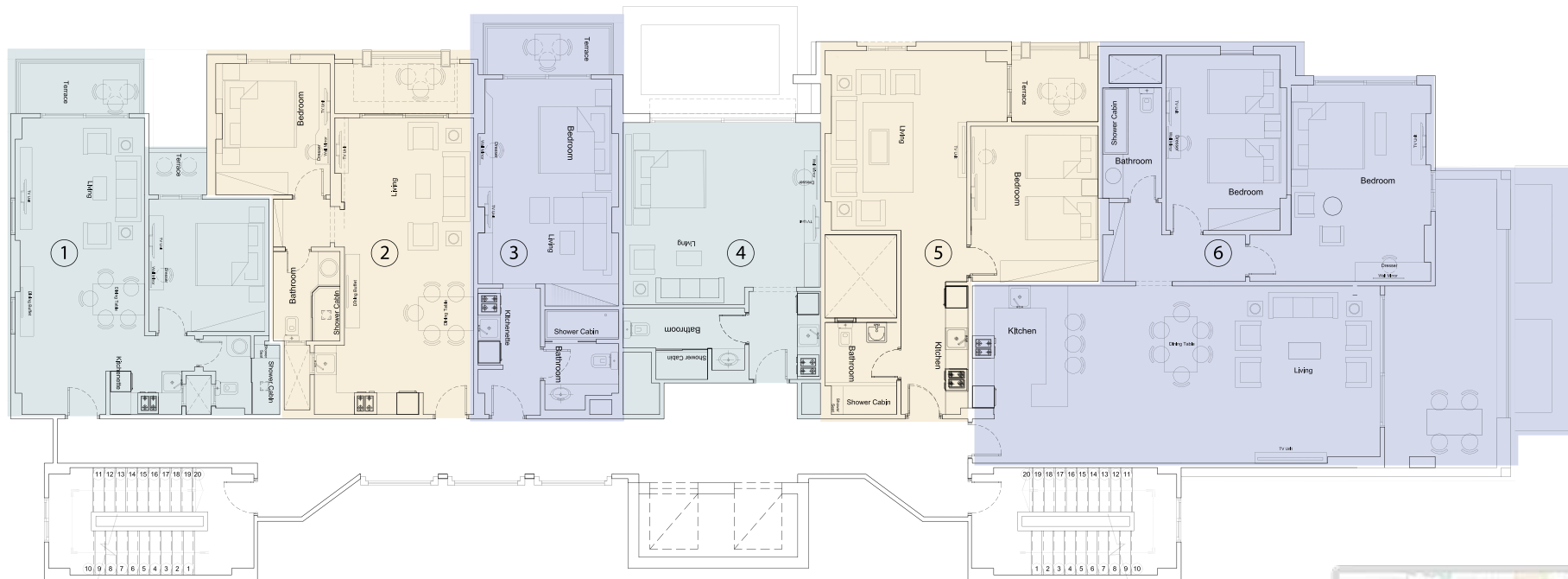
## 1<sup>st</sup> Floor





# Building 11 & 10

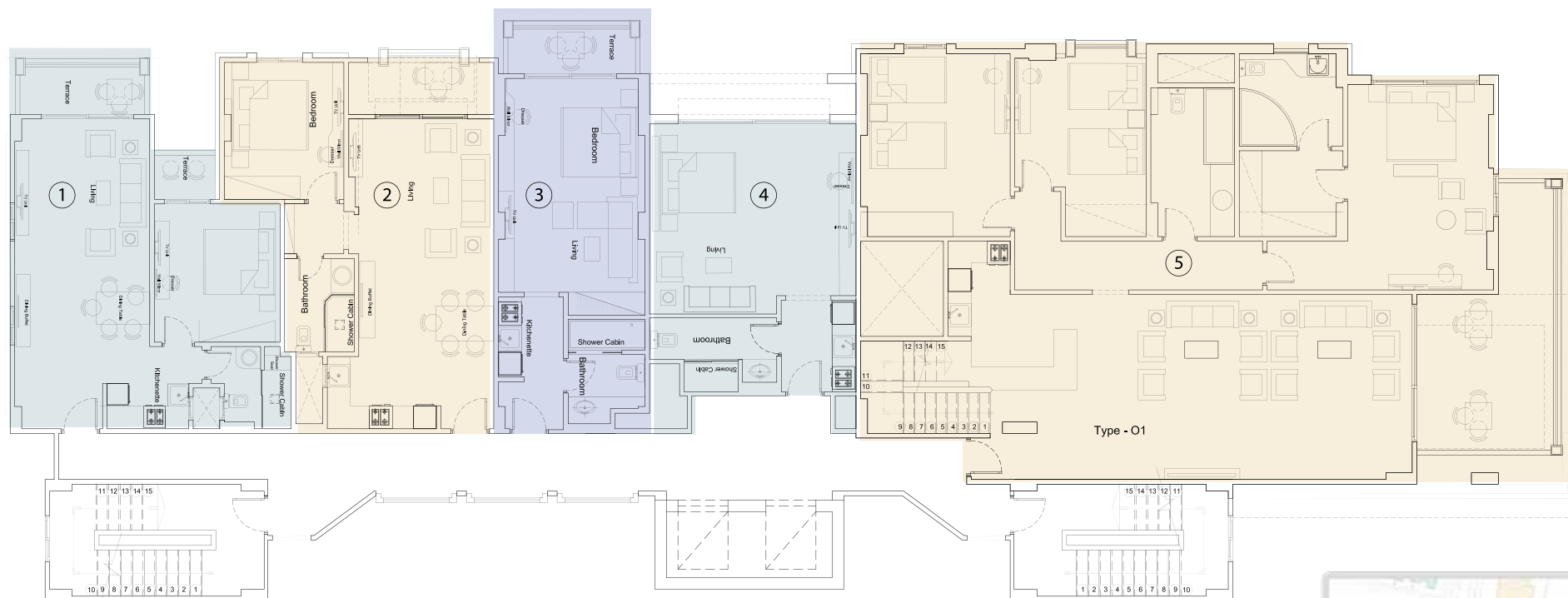
## 2<sup>nd</sup> Floor



- |            |             |
|------------|-------------|
| ① Type - C | ④ Type - E  |
| ② Type - B | ⑤ Type - L  |
| ③ Type - A | ⑥ Type - M1 |

# Building 10 & 11

## 3<sup>rd</sup> Floor

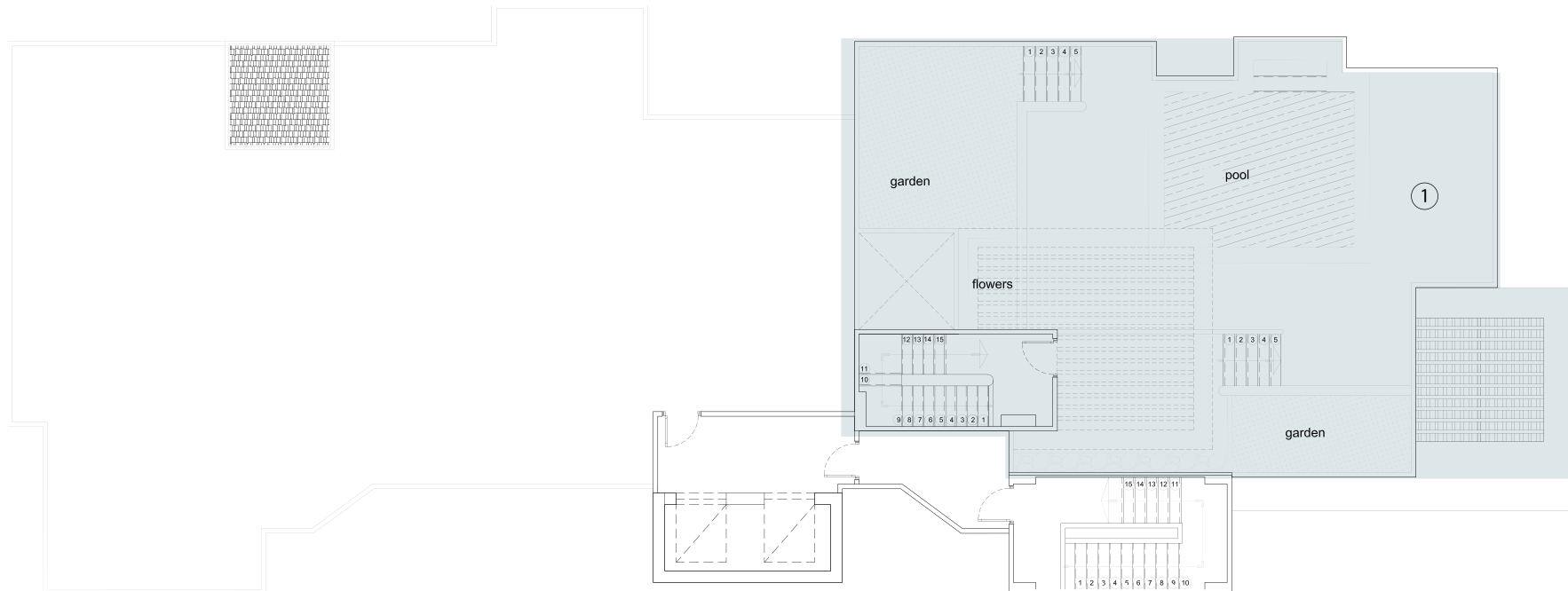


- ① Type - C
- ② Type - B
- ③ Type - A
- ④ Type - E
- ⑤ Type - O1



# Building 11 & 10

## Roof



① Type - O1



The background of the entire page is a photograph of ocean waves. The waves are white and frothy, breaking against a greyish-blue sea. The sky is a pale, hazy blue. The overall tone is serene and coastal.

ALC AMAR  
S A H L H A S H E E S H

Unit Types



# TYPE A

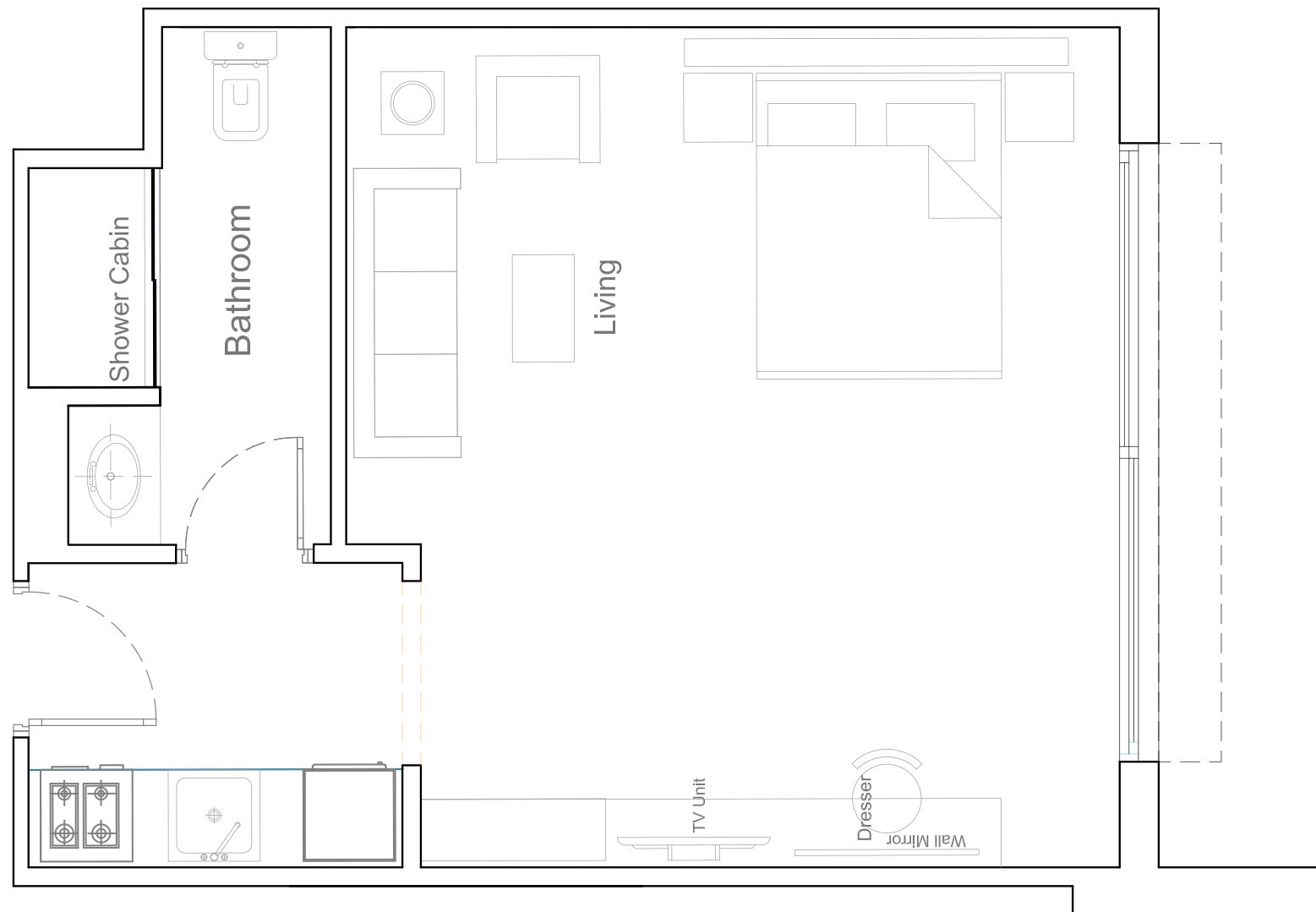
## Studio

52.8 sqm



# TYPE E Studio

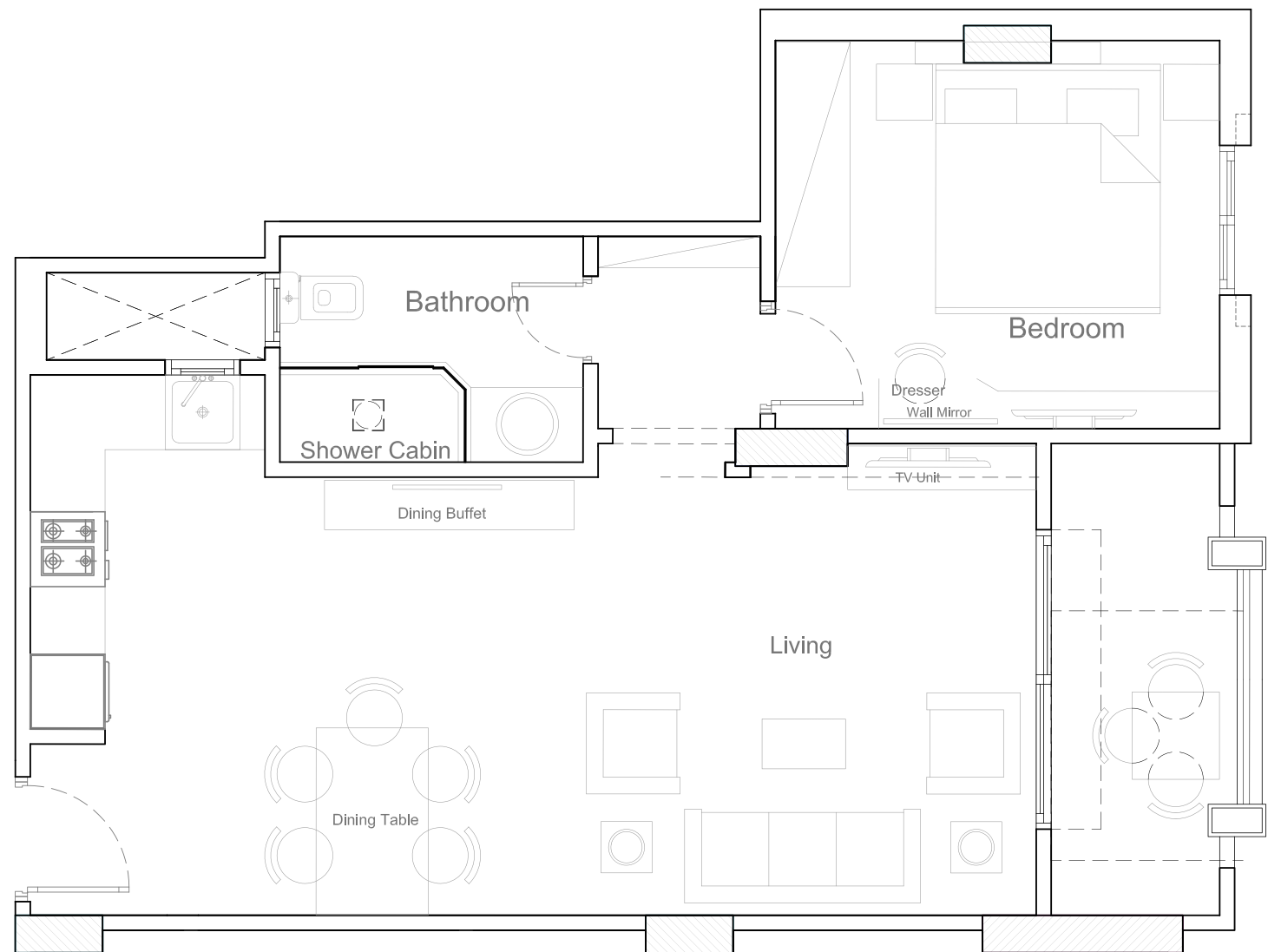
48 sqm



# TYPE B

## One Bedroom

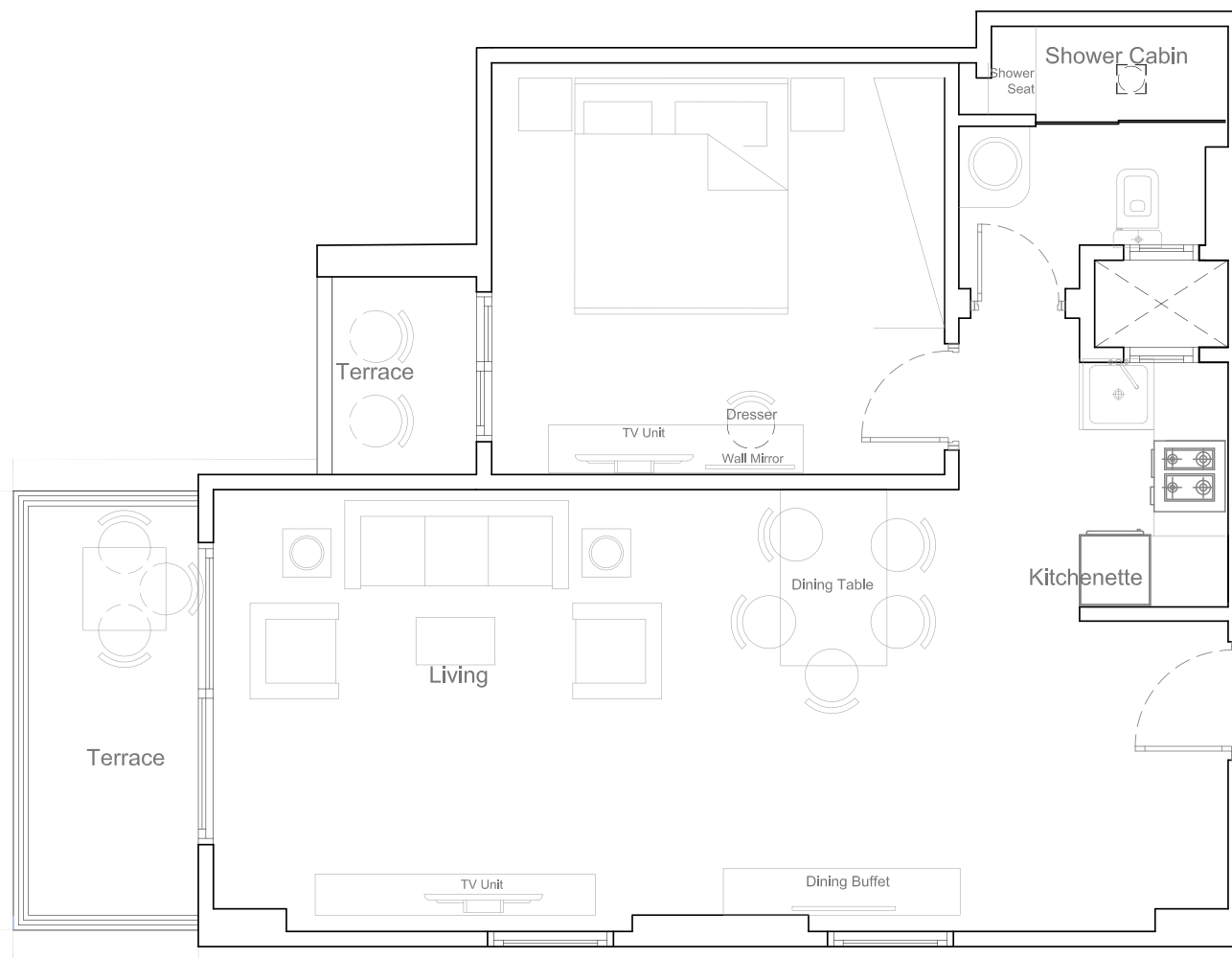
72 sqm



# TYPE C

## One Bedroom

72 sqm

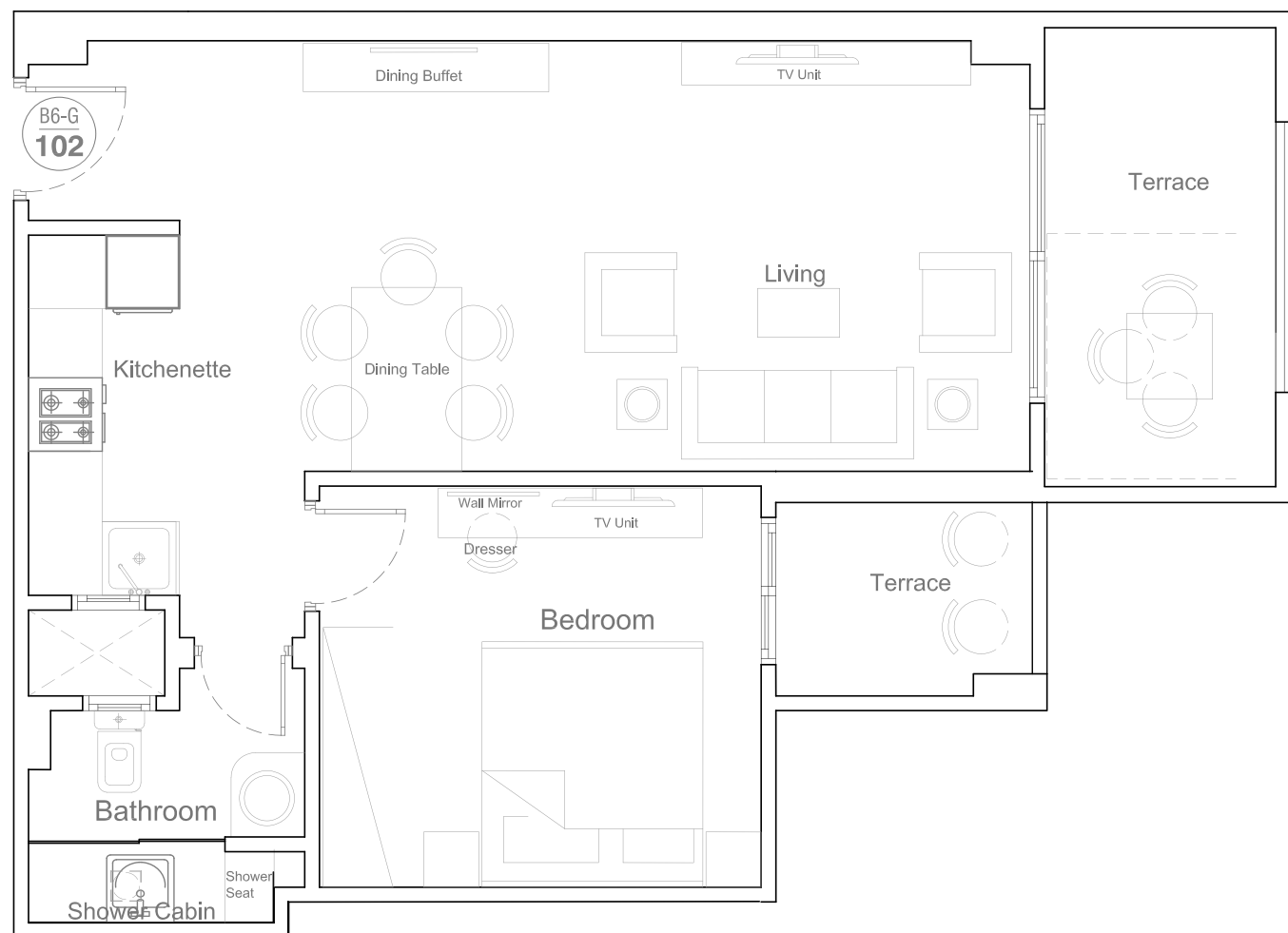




# TYPE C1

## One Bedroom

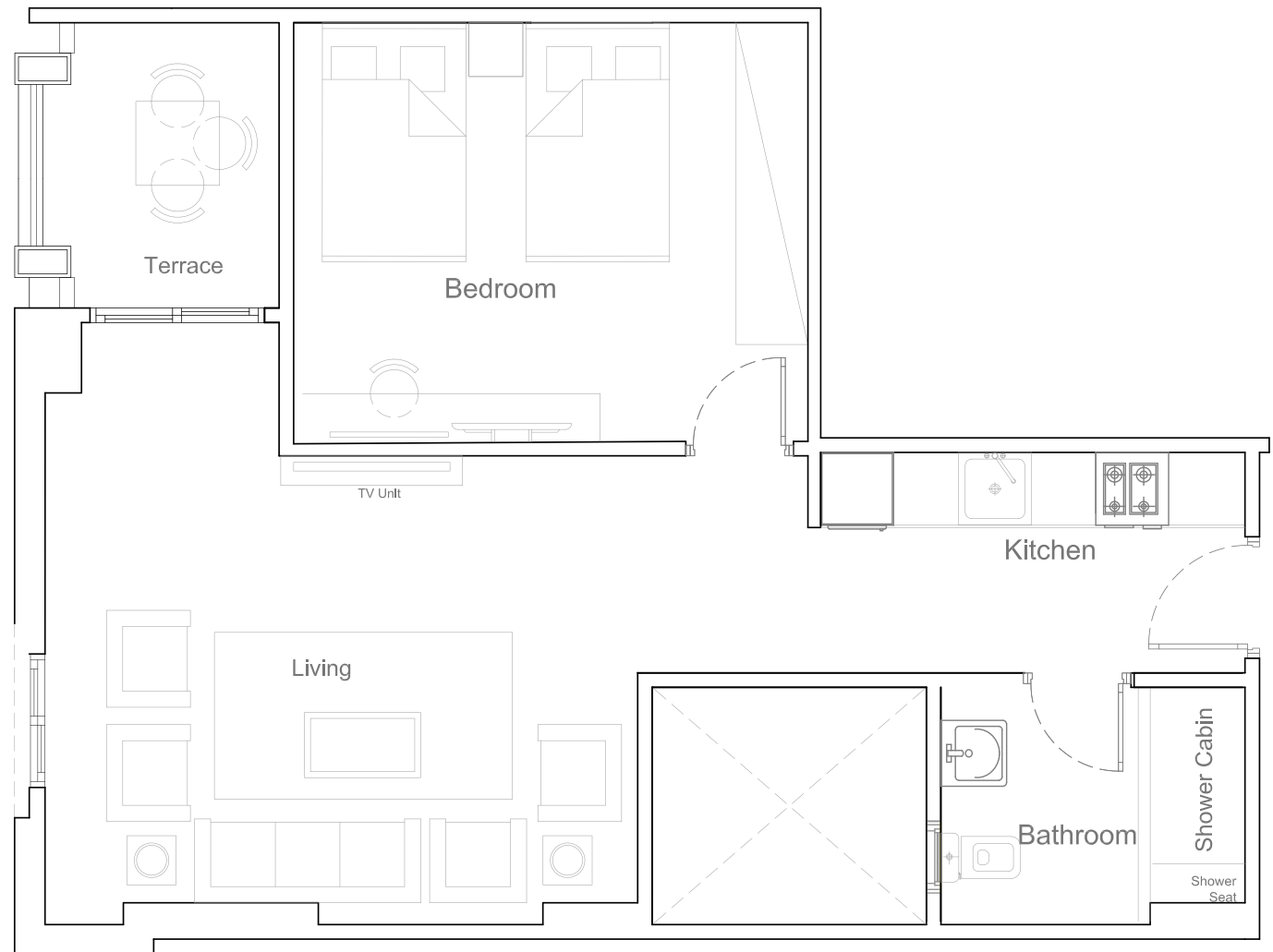
78 sqm



# TYPE L

## One Bedroom

74 sqm



# TYPE D

## Two Bedroom

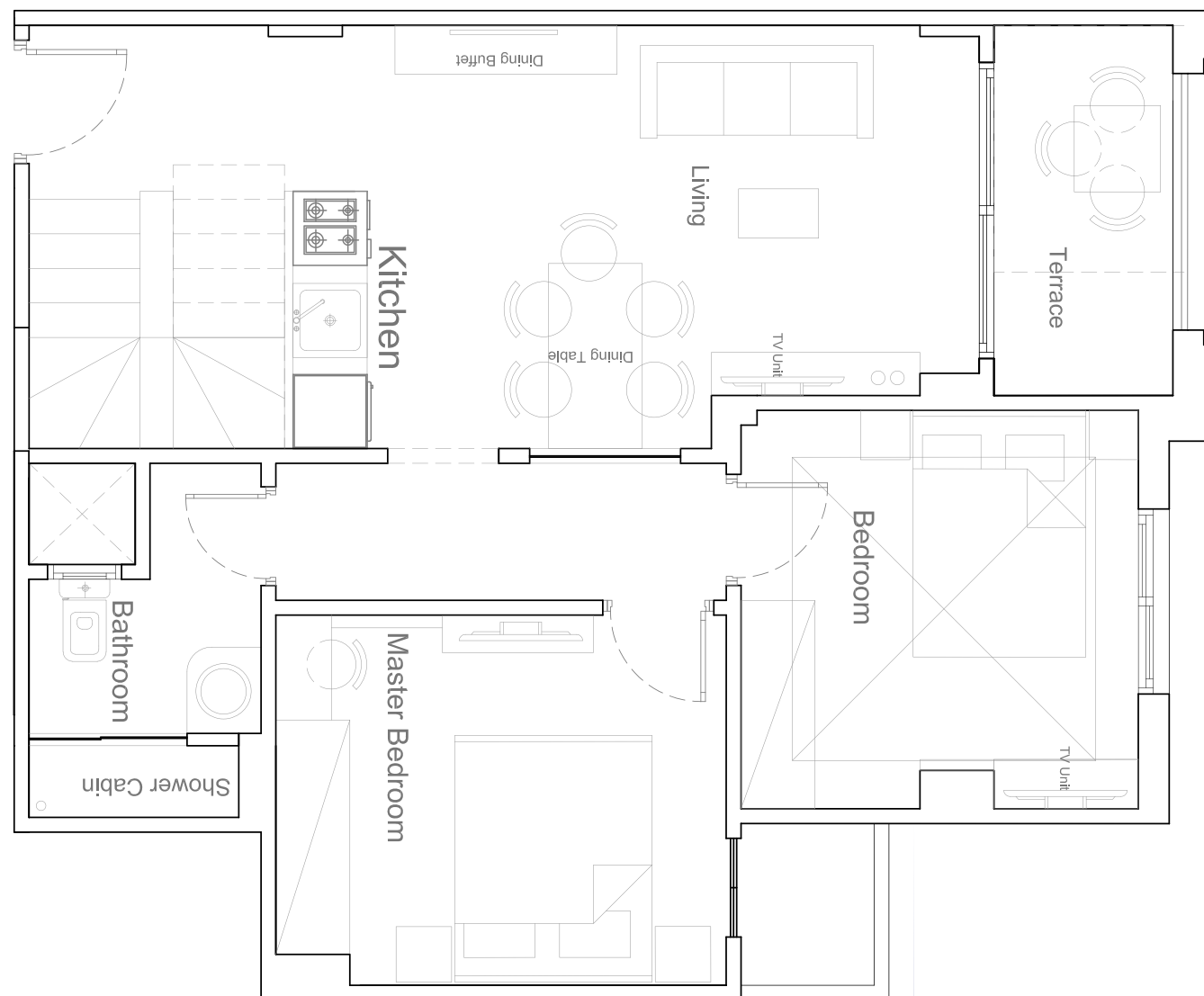
82.2 sqm



# TYPE N

## Two Bedroom

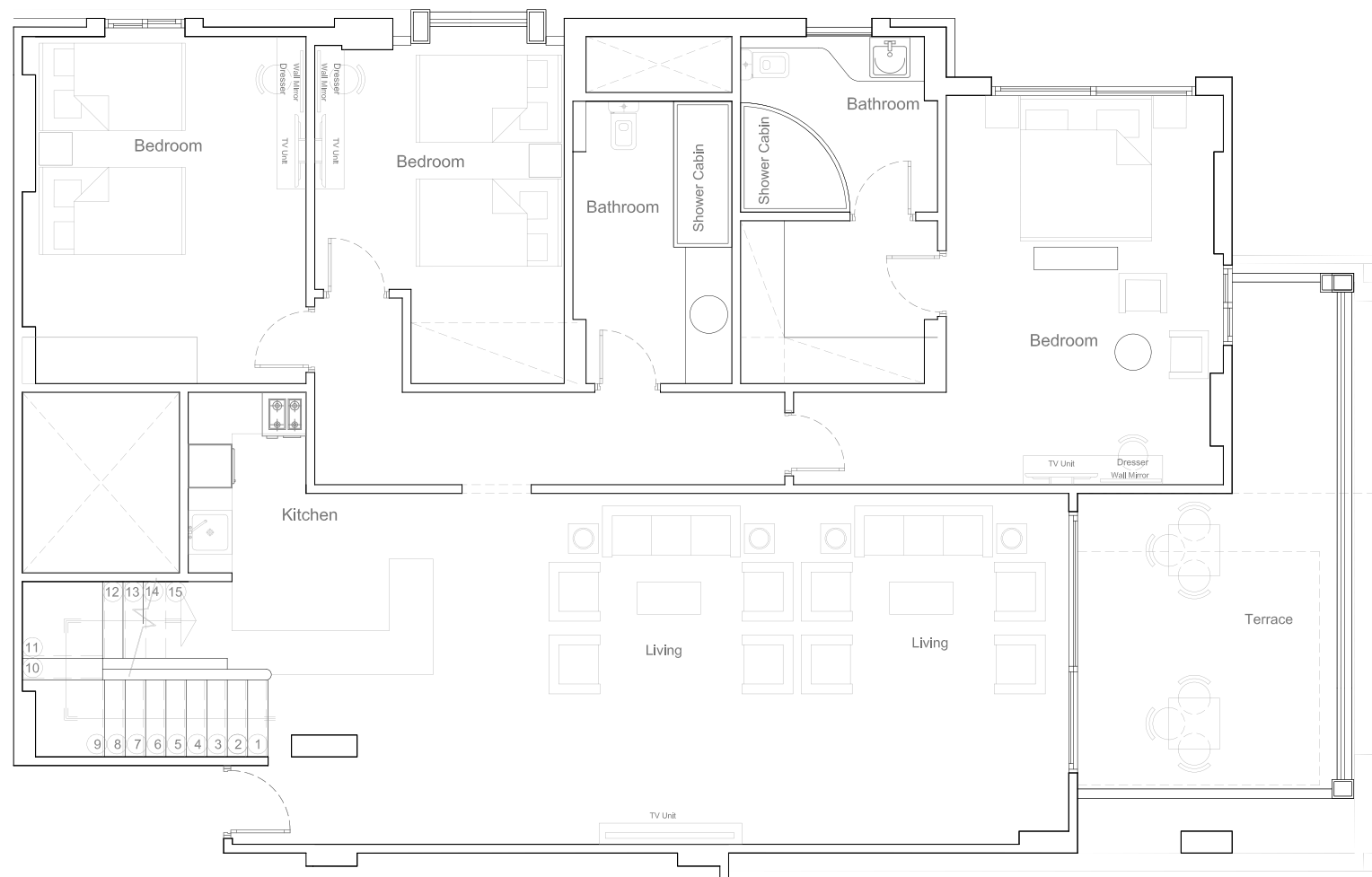
85.2 sqm





# TYPE O1 Penthouse

244.8 sqm



# ALC AMAR

S A H L H A S H E E S H

The materials and designs herein are correct at the time of printing. Core Developments reserves the right to make modifications at any time.  
This document and its content are copyrighted by Core Developments. All rights are therefore reserved. Unauthorized reproduction, display or other dissemination  
of such material is strictly prohibited and constitutes copyright infringement.



DEVELOPMENTS

# ALCANTARA

S A H L H A S H E E S H

*On The Rise*

[www.core-egy.com](http://www.core-egy.com)

 @TheCoreDevelopments

 @TheCoreDevelopments

 +201203333700

**Sahl Hasheesh Office:**  
Old Town, Building B  
Ground Floor, Office 4

**Hurghada Office:**  
New Kawther, Building 9  
Banks District

**New Cairo Office**  
Cairo Business Plaza  
Office 304, South Tower  
North 90th St., New Cairo